

55 SERIES

Underwater Electrical Dry-Mate Connectors



Contents

| | |
|--|-----------|
| Introduction | 4 |
| Connector Part Numbering | 5 |
| Connector Dimensions - Moulded | 6 |
| 5501 – CCP (Cable Connector Plug) | 6 |
| 5502 – CCR (Cable Connector Receptacle) | 6 |
| 55R1 – CCP/RA (Cable Connector Plug 90°) | 7 |
| 55R2 – CCR/RA (Cable Connector Receptacle 90°) | 7 |
| Connector Dimensions – Pressure Balanced Oil Filled | 8 |
| 55OF1 – CCP (Oil Filled Connector Plug) | 8 |
| 55OF2 – CCR (Oil Filled Connector Receptacle) | 8 |
| 55OFR1 – CCP (Oil Filled Connector Plug 90°) | 9 |
| 55OFR2 – CCR (Oil Filled Connector Receptacle 90°) | 9 |
| Connector Dimensions – Attachable | 10 |
| 55A1 – CCP / 55M1 - CCP (Attachable and Moulded Attachable Cable Connector Plug) | 10 |
| 55A2 – CCR (Attachable Cable Connector Receptacle) | 10 |
| Connector Dimensions – Dummy Sealing Caps | 11 |
| 55D1 – DC (Dummy Plug, Sealing Cap) | 11 |
| 55D2 – DC (Dummy Receptacle, Sealing Cap) | 11 |
| Connector Dimensions – Mounted Receptacles | 12 |
| 5506 – FCR (Flanged Connector Receptacle) | 12 |
| 5507 – BCR (Bulkhead Connector Receptacle) | 12 |
| Mounted Receptacle Interface Machining Detail | 13 |
| 5506 – FCR (Flanged Connector Receptacle) | 13 |
| 5507 – BCR (Bulkhead Connector Receptacle) | 13 |
| Contact Configurations & Specifications | 14 |
| Shell Size 15 | 14 |
| Shell Size 20 | 14 |
| Shell Size 24 | 14 |
| Shell Size 32 | 14 |
| Installation & Maintenance Guide | 15 |
| UKCA Certificate of Conformity | 16 |
| EC Certificate of Conformity | 17 |

Introduction

Connector Overview

The Scorpion “55 Series” is a dry mate electrical connector for harsh environment and subsea applications.

Building on this “industry standard” the Scorpion “55 Series” introduces new features and levels of performance whilst maintaining full compatibility within the “55” platform.

Available in a choice of shell sizes in multiple material and contact configurations, the “Scorpion 55” series offers a wide range of connector solutions.

Moulded assemblies are available in Polyurethane, Polychloroprene and Polyethylene as well as Pressure Balanced Oil Filled and “Customer Specific” builds.



| SPECIFICATIONS | |
|------------------|---|
| Shell Sizes: | 4 |
| Contacts: | 2 to 21 |
| Voltage Rating: | Up to 440 Vac / 600 Vdc 3k Vdc |
| Current Rating: | Up to 10 to 50 Amps 70 Amps |
| Ethernet Speed: | Up to Gigabit 1508, 2008, 2013, & 2021 Planforms |
| Pressure Rating: | Up to 10,000 psi / 690 Bar |
| Temp Rating: | -20°C to 90°C |
| Mating Cycles: | >500 |

| MATERIALS | |
|------------------|---|
| Connector Shell: | Passivated 316L S/Stl as standard. Also available in Titanium, Inconel, Monel & Aluminium. |
| Coupling Nut: | Fluoro Polymer Coated 316L S/Stl as standard. Also available in Titanium, Inconel, Monel & Aluminium. |
| Contacts: | Copper Zinc Alloy with Gold over Nickel Plating. |
| Insulator: | Polychloroprene. |



Connector Part Numbering

| | | | | | | | | | | | | | | |
|--------------------------|--|--|--|----|----|---|----|----|---|----|---|------|---|----|
| Connector Part Numbering | | | | 55 | 01 | - | 20 | 08 | - | 00 | - | 0004 | - | EL |
| 55 Series | | | | | | | | | | | | | | |
| Connector Type | | | | | | | | | | | | | | |
| 01 | CCP (Cable Connector Plug) | | | | | | | | | | | | | |
| 02 | CCR (Cable Connector Receptacle) | | | | | | | | | | | | | |
| R1 | CCP/RA (Cable Connector Plug 90°) | | | | | | | | | | | | | |
| R2 | CCR/RA (Cable Connector Receptacle 90°) | | | | | | | | | | | | | |
| OF1 | CCP/OF (Oil Filled Connector Plug) | | | | | | | | | | | | | |
| OF2 | CCR/OF (Oil Filled Connector Receptacle) | | | | | | | | | | | | | |
| OFR1 | CCP-OFRA (Oil Filled Connector Plug 90°) | | | | | | | | | | | | | |
| OFR2 | CCP-OFRA (Oil Filled Connector Receptacle 90°) | | | | | | | | | | | | | |
| A1 | CCP (Attachable Cable Connector Plug) | | | | | | | | | | | | | |
| M1 | CCP (Moulded Attachable Cable Connector Plug) | | | | | | | | | | | | | |
| A2 | CCR (Attachable Cable Connector Receptacle) | | | | | | | | | | | | | |
| D1 | DC1 (Dummy Plug Sealing Cap) | | | | | | | | | | | | | |
| D2 | DC2 (Dummy Receptacle Sealing Cap) | | | | | | | | | | | | | |
| 06 | FCR (Flange Connector Receptacle) | | | | | | | | | | | | | |
| 07 | BCR (Bulkhead Connector Receptacle) | | | | | | | | | | | | | |
| Shell Size | | | | | | | | | | | | | | |
| 15 | | | | | | | | | | | | | | |
| 20 | | | | | | | | | | | | | | |
| 24 | | | | | | | | | | | | | | |
| 32 | | | | | | | | | | | | | | |
| Number of Contacts | | | | | | | | | | | | | | |
| 08 | See page 14 for Contact Configurations | | | | | | | | | | | | | |
| Wiring Configuration | | | | | | | | | | | | | | |
| 00 | Standard Configuration with Straight Cores* | | | | | | | | | | | | | |
| 01 | 01 and Onwards are Custom Configurations | | | | | | | | | | | | | |
| E1 | E1 and Onwards are Custom Ethernet Configurations (Only in Certain Planforms, See page 14) | | | | | | | | | | | | | |
| Cable Length | | | | | | | | | | | | | | |
| 0001 | = 1 Foot | | | | | | | | | | | | | |
| 0002 | = 2 Feet | | | | | | | | | | | | | |
| 0003 | = 3 Feet | | | | | | | | | | | | | |
| 0004 | = 4 Feet | | | | | | | | | | | | | |
| Earth Lead | | | | | | | | | | | | | | |
| EL | | | | | | | | | | | | | | |

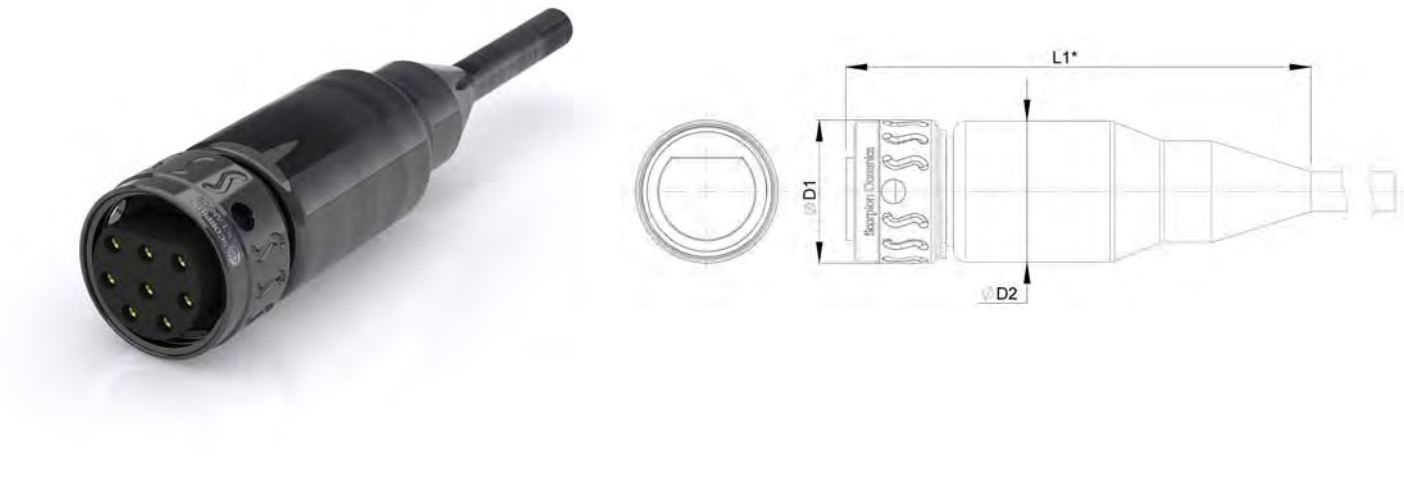
| PART NUMBER EXAMPLES | |
|----------------------|---|
| Description: | 55 Series: Size 15, 8 Contact, Cable Plug c/w 4 foot Cable in the Standard Wiring Configuration. |
| Part Number: | 5501-1508-00-0004 |
| Description: | 55 Series: Size 20, 21 Contacts, Flanged Receptacle, c/w 4 foot Tails in the Standard Wiring Configuration. |
| Part Number: | 5506-2021-00-0004 |

Scorpion Oceanics holds a wide range of Electrical, Coaxial & Category Cables sheathed in PU, PE & Neoprene together with oil resistant hose and equipment wire all ideally suited to the “55 Series” for the manufacture of stock and bespoke assemblies.

*CE & UKCA marking applies to “standard configuration” products.

Connector Dimensions - Moulded

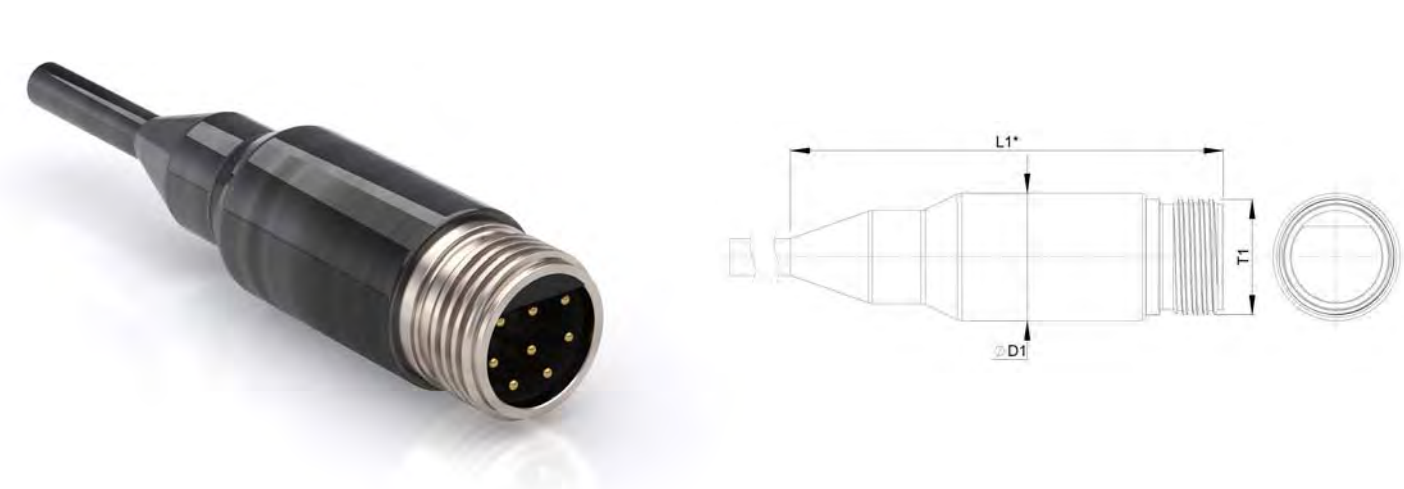
5501 – CCP (Cable Connector Plug)



| Shell Size | Part Number | L1mm (In) | ØD1mm (In) | ØD2mm (In) |
|------------|-------------------|-----------------|----------------|----------------|
| 15 | 5501-15##-00-#### | 101.10 / (3.98) | 28.00 / (1.10) | 27.00 / (1.06) |
| 20 | 5501-20##-00-#### | 123.20 / (4.85) | 36.00 / (1.42) | 35.00 / (1.38) |
| 24 | 5501-24##-00-#### | 143.25 / (5.64) | 43.00 / (1.69) | 42.00 / (1.65) |
| 32 | 5501-32##-00-#### | 181.20 / (7.13) | 56.50 / (2.23) | 54.50/ (2.15) |

Moulded length is given as a typical guide and can be amended to suit different applications and cable types.

5502 – CCR (Cable Connector Receptacle)

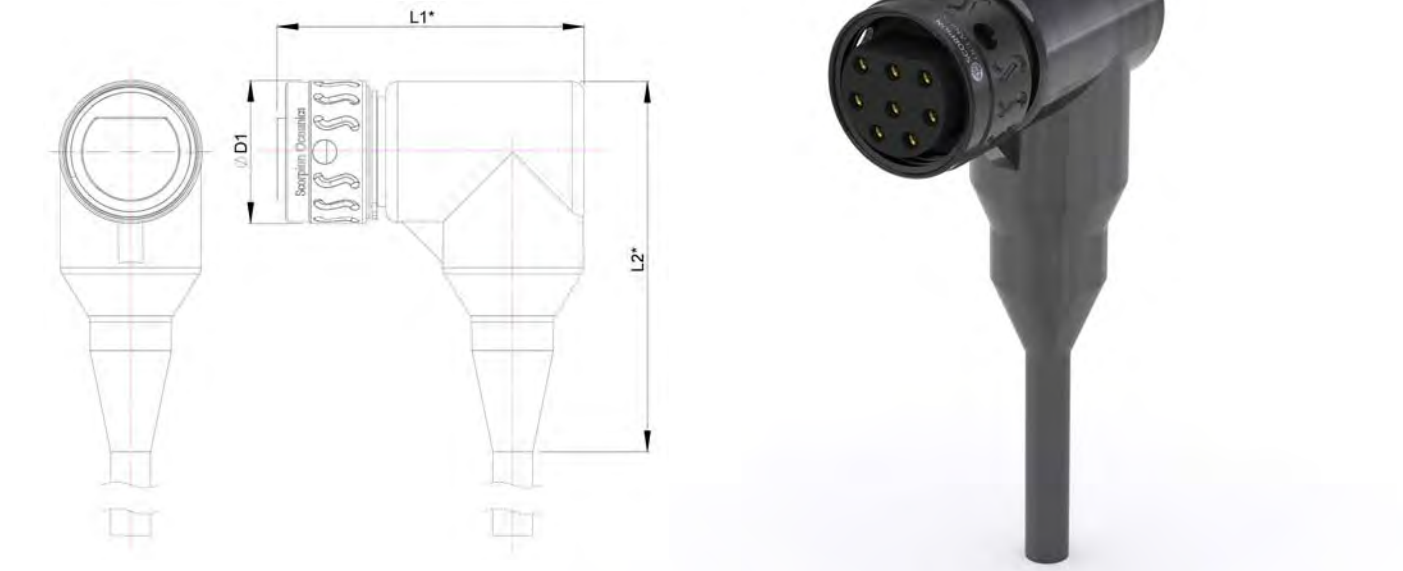


| Shell Size | Part Number | L1mm (In) | ØD1mm (In) | T1 |
|------------|-------------------|-----------------|----------------|-------------------|
| 15 | 5502-15##-00-#### | 97.95 / (3.86) | 27.00 / (1.06) | 15/16-20 UNEF |
| 20 | 5502-20##-00-#### | 121.15 / (4.77) | 35.00 / (1.38) | 1 1/4-9 STUB ACME |
| 24 | 5502-24##-00-#### | 140.25 / (5.52) | 42.00 / (1.65) | 1 1/2-9 STUB ACME |
| 32 | 5502-32##-00-#### | 177.50 / (6.99) | 54.50 / (2.15) | 2-9 STUB ACME |

Moulded length is given as a typical guide and can be amended to suit different applications and cable types.

Connector Dimensions - Moulded

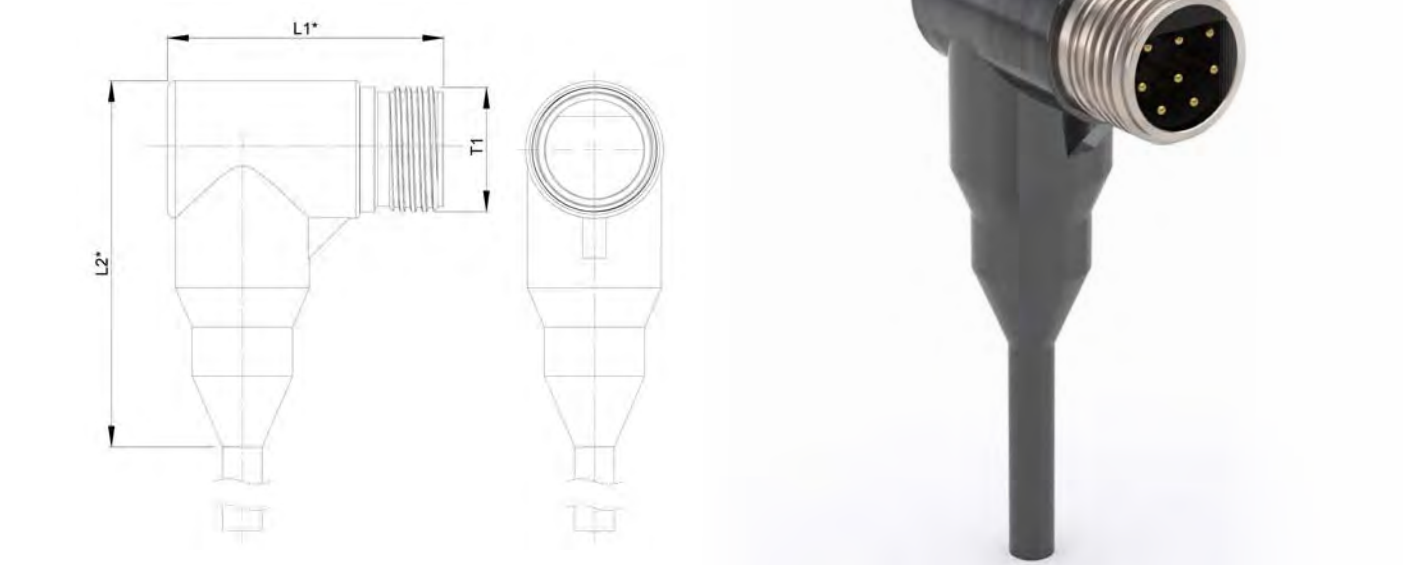
55R1 – CCP/RA (Cable Connector Plug 90°)



| Shell Size | Part Number | L1mm (In) | L2mm (In) | ØD1mm (In) |
|------------|-------------------|----------------|-----------------|----------------|
| 15 | 55R1-15##-00-#### | 71.70 / (2.82) | 71.50 / (2.82) | 28.00 / (1.10) |
| 20 | 55R1-20##-00-#### | 76.20 / (3.00) | 97.00 / (3.82) | 36.00 / (1.42) |
| 24 | 55R1-24##-00-#### | 86.55 / (3.41) | 118.50 / (4.66) | 43.00 / (1.69) |
| 32 | 55R1-32##-00-#### | 92.20 / (3.63) | 150.40 / (5.92) | 56.50 / (2.23) |

Moulded length is given as a typical guide and can be amended to suit different applications and cable types.

55R2 – CCR/RA (Cable Connector Receptacle 90°)

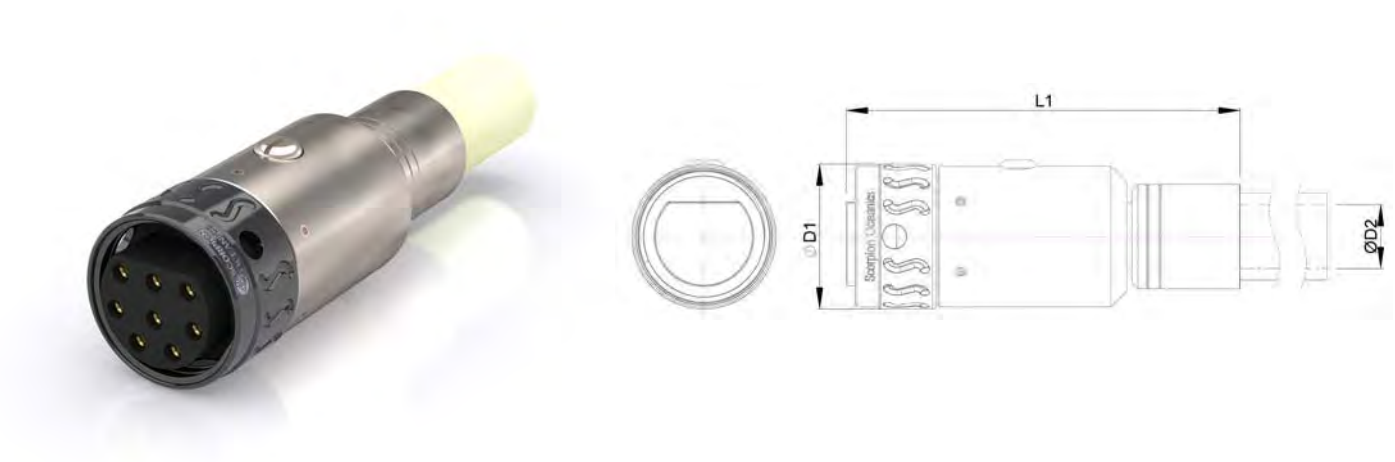


| Shell Size | Part Number | L1mm (In) | L2mm (In) | T1 |
|------------|-------------------|----------------|-----------------|-------------------|
| 15 | 55R2-15##-00-#### | 68.55/ (2.70) | 71.50 / (2.82) | 15/16-20 UNEF |
| 20 | 55R2-20##-00-#### | 74.15 / (2.92) | 97.00 / (3.82) | 1 1/4-9 STUB ACME |
| 24 | 55R2-24##-00-#### | 83.55 / (3.29) | 118.50 / (4.66) | 1 1/2-9 STUB ACME |
| 32 | 55R2-32##-00-#### | 89.92 / (3.54) | 150.40 / (5.92) | 2-9 STUB ACME |

Moulded length is given as a typical guide and can be amended to suit different applications and cable types.

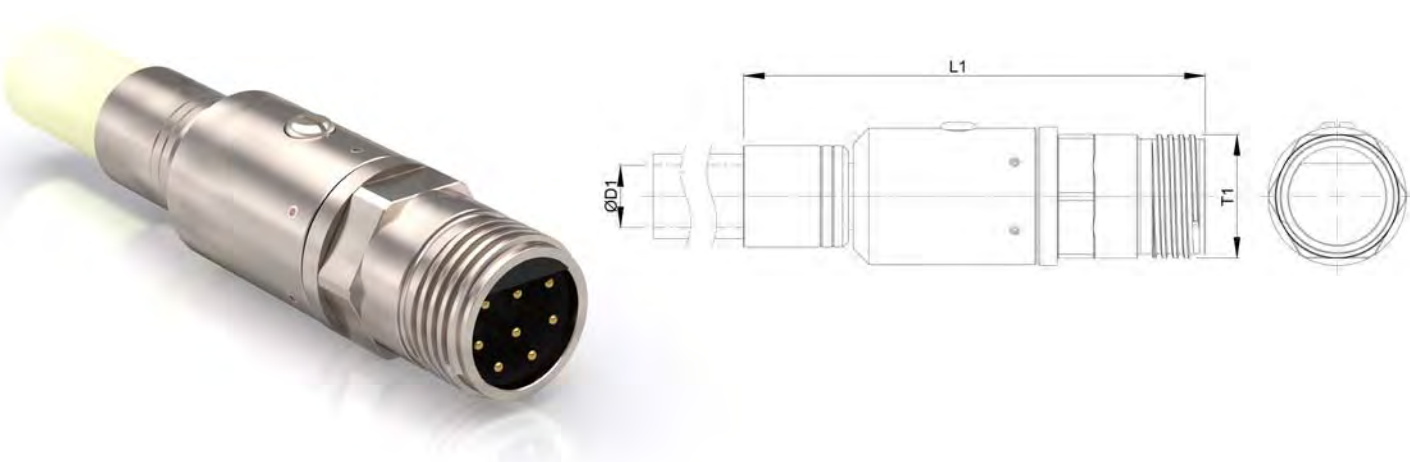
Connector Dimensions – Pressure Balanced Oil Filled

55OF1 – CCP (Oil Filled Connector Plug)



| Shell Size | Part Number | L1mm (In) | ØD1mm (In) | ØD2mm (In) |
|------------|--------------------|----------------|----------------|----------------|
| 15 | 55OF1-15##-00-#### | 83.80 / (3.30) | 28.00 / (1.10) | 12.95 / (0.51) |
| 20 | 55OF1-20##-00-#### | 97.80 / (3.85) | 36.00 / (1.42) | 16.00 / (0.63) |
| 24 | 55OF1-24##-00-#### | 97.80 / (3.85) | 43.00 / (1.69) | 16.00 / (0.63) |

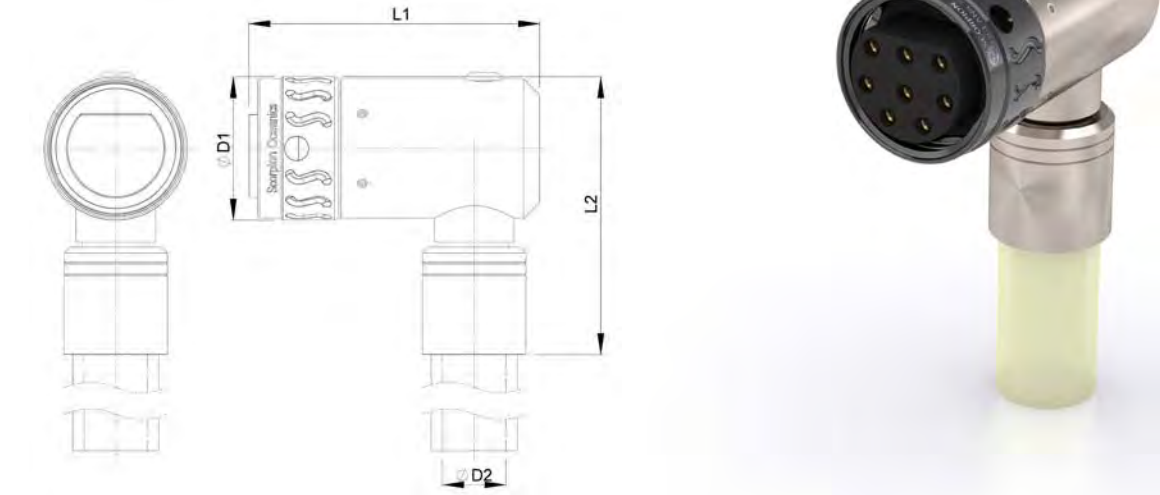
55OF2 – CCR (Oil Filled Connector Receptacle)



| Shell Size | Part Number | L1mm (In) | ØD1mm (In) | T1 |
|------------|--------------------|-----------------|----------------|-------------------|
| 15 | 55OF2-15##-00-#### | 98.55 / (3.88) | 12.95 / (0.51) | 15/16-20 UNEF |
| 20 | 55OF2-20##-00-#### | 118.87 / (4.68) | 16.00 / (0.63) | 1 1/4-9 STUB ACME |
| 24 | 55OF2-24##-00-#### | 118.87 / (4.68) | 16.00 / (0.63) | 1 1/2-9 STUB ACME |

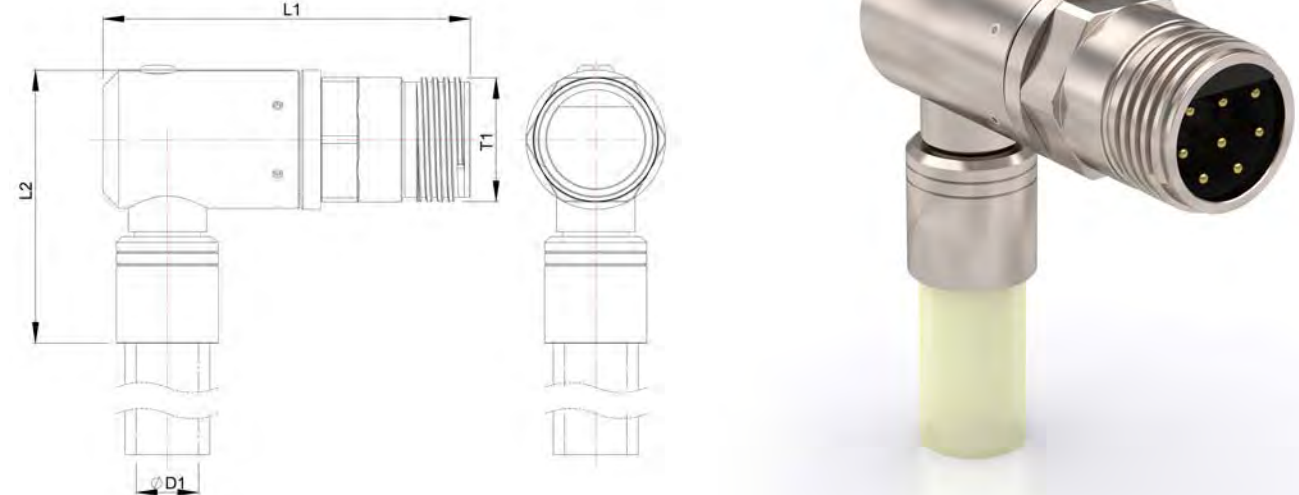
Connector Dimensions – Pressure Balanced Oil Filled

55OFR1 – CCP (Oil Filled Connector Plug 90°)



| Shell Size | Part Number | L1mm (In) | L2mm (In) | ØD1mm (In) | ØD2mm (In) |
|------------|---------------------|----------------|----------------|----------------|----------------|
| 15 | 55OFR1-15##-00-#### | 66.55 / (2.62) | 59.20 / (2.33) | 28.00 / (1.10) | 12.95 / (0.51) |
| 20 | 55OFR1-20##-00-#### | 72.90 / (2.87) | 69.85 / (2.75) | 36.00 / (1.42) | 16.00 / (0.63) |
| 24 | 55OFR1-24##-00-#### | 72.90 / (2.87) | 76.95 / (3.03) | 43.00 / (1.69) | 16.00 / (0.63) |

55OFR2 – CCR (Oil Filled Connector Receptacle 90°)



| Shell Size | Part Number | L1mm (In) | L2mm (In) | ØD1mm (In) | T1 |
|------------|---------------------|----------------|----------------|----------------|-------------------|
| 15 | 55OFR2-15##-00-#### | 81.30 / (3.20) | 60.95 / (2.40) | 12.95 / (0.51) | 15/16-20 UNEF |
| 20 | 55OFR2-20##-00-#### | 93.75 / (3.69) | 69.60 / (2.74) | 16.00 / (0.63) | 1 1/4-9 STUB ACME |
| 24 | 55OFR2-24##-00-#### | 94.00 / (3.70) | 76.70 / (3.02) | 16.00 / (0.63) | 1 1/2-9 STUB ACME |

Connector Dimensions – Attachable

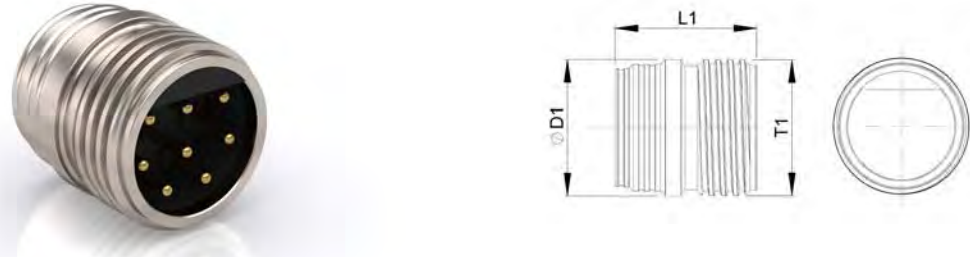
55A1 – CCP / 55M1 - CCP (Attachable and Moulded Attachable Cable Connector Plug)



| Shell Size | Part Number | L1mm (In) | ØD1mm (In) | ØD2mm (In) |
|------------|-------------|----------------|----------------|----------------|
| 15 | 55A1-15## | 39.00 / (1.54) | 28.00 / (1.10) | 17.45 / (0.68) |
| 20 | 55A1-20## | 39.55 / (1.56) | 36.00 / (1.42) | 27.45 / (1.08) |
| 24 | 55A1-24## | 39.55 / (1.56) | 43.00 / (1.69) | 33.40 / (1.30) |
| 32 | 55A1-32## | 39.55 / (1.56) | 56.50 / (2.23) | 45.70 / (1.81) |

55A1 - CCP has solder contacts in the rear of the CCP.
55M1- CCP has a socket and pin arrangement in the rear of the CCP to allow for easier onsite termination.

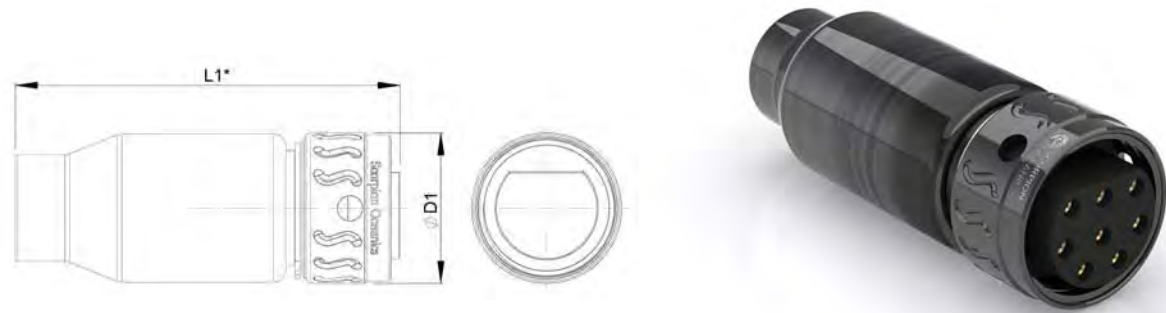
55A2 – CCR (Attachable Cable Connector Receptacle)



| Shell Size | Part Number | L1mm (In) | ØD1mm (In) | T1 |
|------------|-------------|----------------|----------------|-------------------|
| 15 | 55A2-15## | 35.00 / (1.38) | 25.40 / (1.00) | 15/16-20 UNEF |
| 20 | 55A2-20## | 35.00 / (1.38) | 31.75 / (1.25) | 1 1/4-9 STUB ACME |
| 24 | 55A2-24## | 35.00 / (1.38) | 38.10 / (1.50) | 1 1/2-9 STUB ACME |
| 32 | 55A2-32## | 35.00 / (1.38) | 50.80 / (2.00) | 2-9 STUB ACME |

Connector Dimensions – Dummy Sealing Caps

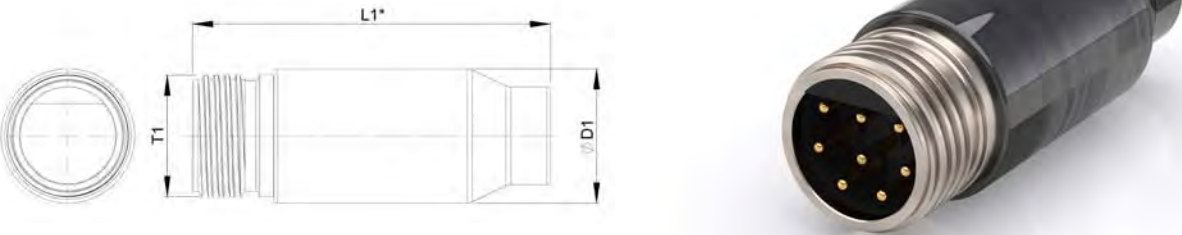
55D1 – DC (Dummy Plug, Sealing Cap)



| Shell Size | Part Number | L1mm (In) | ØD1mm (In) |
|------------|-------------|-----------------|----------------|
| 15 | 55D1-15## | 83.10 / (3.27) | 28.00 / (1.10) |
| 20 | 55D1-20## | 101.20 / (3.98) | 36.00 / (1.42) |
| 24 | 55D1-24## | 113.25 / (4.46) | 43.00 / (1.69) |
| 32 | 55D1-32## | 147.20 / (5.80) | 56.50 / (2.23) |

Moulded length is given as a typical guide and can be amended to suit different applications.

55D2 – DC (Dummy Receptacle, Sealing Cap)

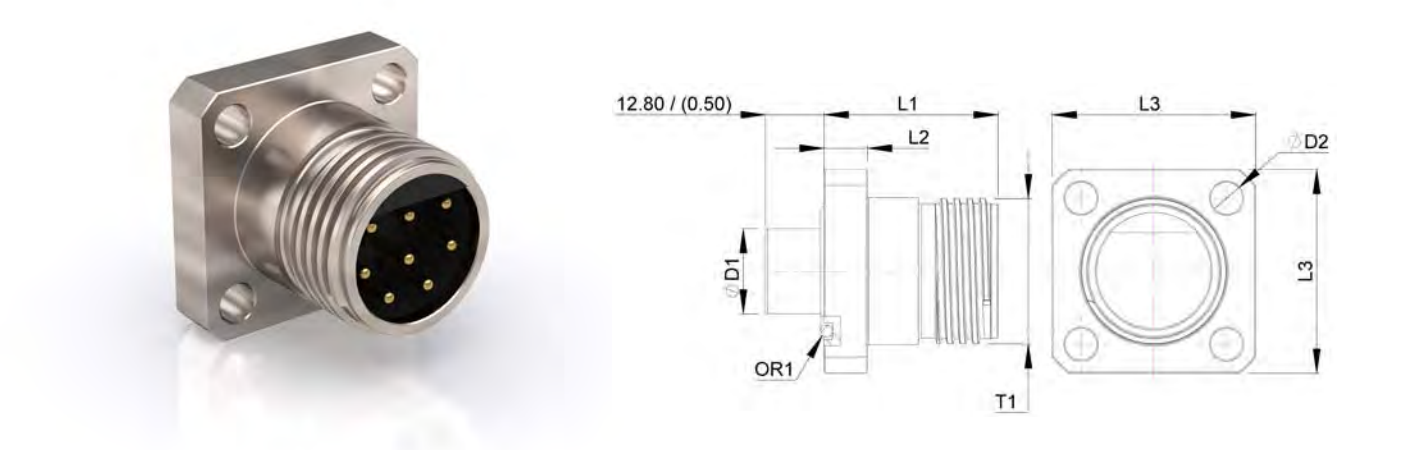


| Shell Size | Part Number | L1mm (In) | ØD1mm (In) | T1 |
|------------|-------------|-----------------|----------------|-------------------|
| 15 | 55D2-15## | 79.95 / (3.15) | 27.00 / (1.06) | 15/16-20 UNEF |
| 20 | 55D2-20## | 99.15 / (3.90) | 35.00 / (1.38) | 1 1/4-9 STUB ACME |
| 24 | 55D2-24## | 110.20 / (4.34) | 42.00 / (1.65) | 1 1/2-9 STUB ACME |
| 32 | 55D2-32## | 143.50 / (5.64) | 54.50 / (2.15) | 2-9 STUB ACME |

Moulded length is given as a typical guide and can be amended to suit different applications.

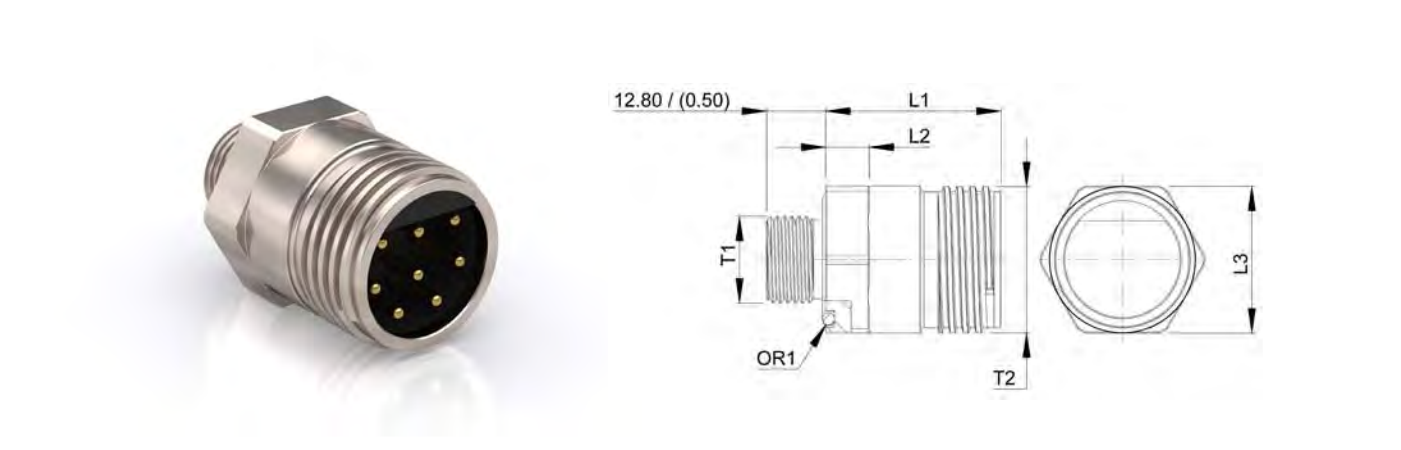
Connector Dimensions – Mounted Receptacles

5506 – FCR (Flanged Connector Receptacle)



| Shell Size | Part Number | L1mm (In) | L2mm (In) | L3mm (In) | ØD1mm (In) | ØD2mm (In) | T1 | OR1 |
|------------|-------------------|----------------|----------------|-----------------|-----------------|---------------|-------------------|-------|
| 15 | 5506-15##-00-#### | 31.75 / (1.25) | 7.95 / (0.313) | 38.10 / (1.50) | 15.90 / (0.625) | 5.50 / (0.22) | 15/16-20 UNEF | BS116 |
| 20 | 5506-20##-00-#### | 38.10 / (1.50) | 9.55 / (0.375) | 44.45 / (1.75) | 18.80 / (0.74) | 7.00 / (0.28) | 1 1/4-9 STUB ACME | BS118 |
| 24 | 5506-24##-00-#### | 38.10 / (1.50) | 9.55 / (0.375) | 50.80 / (2.00) | 25.15 / (0.99) | 7.00 / (0.28) | 1 1/2-9 STUB ACME | BS122 |
| 32 | 5506-32##-00-#### | 38.10 / (1.50) | 9.55 / (0.375) | 66.80 / (2.625) | 38.10 / (1.50) | 8.50 / (0.34) | 2-9 STUB ACME | BS130 |

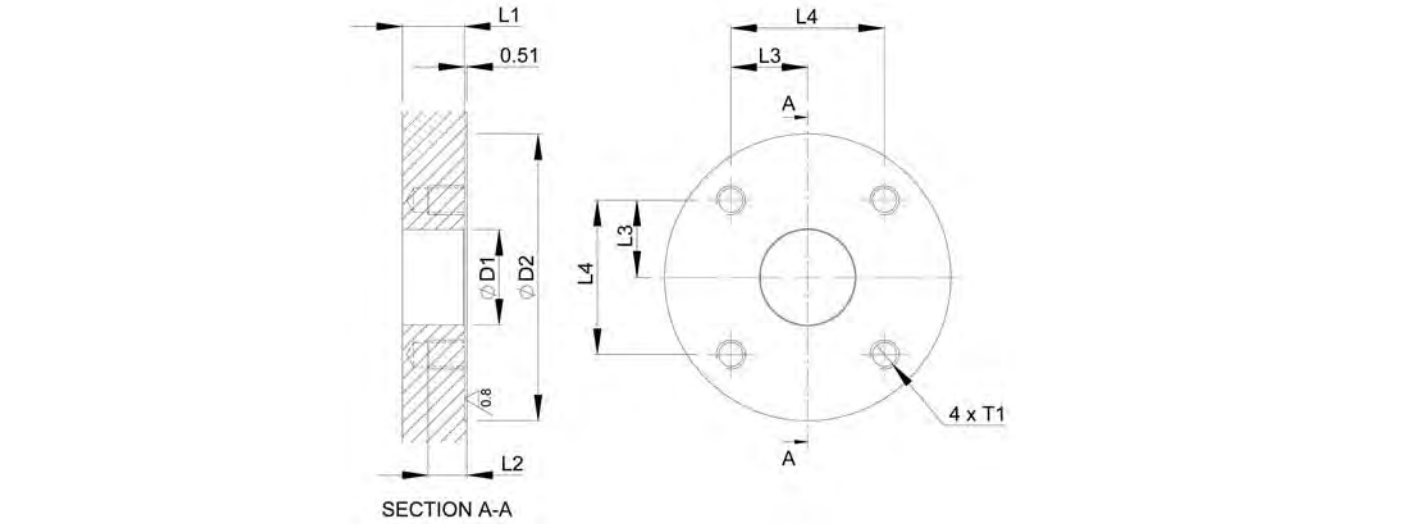
5507 – BCR (Bulkhead Connector Receptacle)



| Shell Size | Part Number | L1mm (In) | L2mm (In) | L3mm (In) | T1 | T2 | OR1 |
|------------|-------------------|----------------|----------------|----------------|--------------|-------------------|-------|
| 15 | 5507-15##-00-#### | 31.75 / (1.25) | 7.95 / (0.313) | 28.45 / (1.12) | 5/8-18 UNF | 15/16-20 UNEF | BS116 |
| 20 | 5507-20##-00-#### | 38.10 / (1.50) | 9.55 / (0.375) | 31.75 / (1.25) | 3/4-16 UNF | 1 1/4-9 STUB ACME | BS118 |
| 24 | 5507-24##-00-#### | 38.10 / (1.50) | 9.55 / (0.375) | 38.10 / (1.50) | 1-14 UNS | 1 1/2-9 STUB ACME | BS122 |
| 32 | 5507-32##-00-#### | 38.10 / (1.50) | 9.55 / (0.375) | 50.80 / (2.00) | 1 1/2-12 UNF | 2-9 STUB ACME | BS130 |

Mounted Receptacle Interface Machining Detail

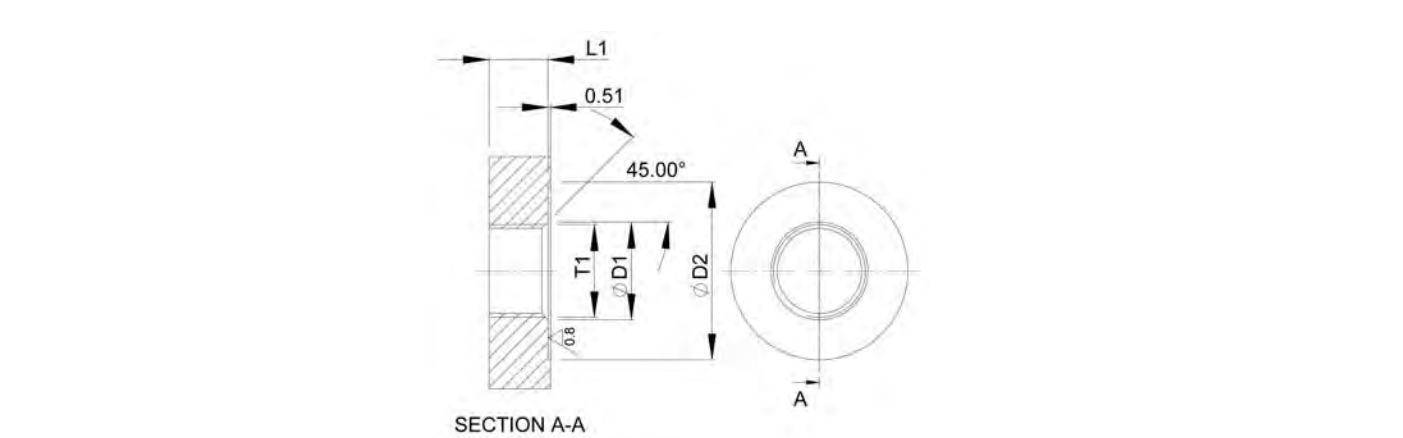
5506 – FCR (Flanged Connector Receptacle)



| Shell Size | L1mm (In) Min. | L2mm (In) | L3mm (In) | L4mm (In) | ØD1mm (In) | ØD2mm (In) | T1 |
|------------|-----------------|----------------|------------------|----------------|----------------|----------------|------------|
| 15 | 13.35 / (0.525) | 8.00 / (0.315) | 12.70 / (0.50) | 25.40 / (1.00) | 16.50 / (0.65) | 50.30 / (1.98) | M5x0.8 6H |
| 20 | 15.90 / (0.625) | 9.50 / (0.375) | 15.875 / (0.625) | 31.75 / (1.25) | 19.55 / (0.77) | 59.20 / (2.33) | M6x1.0 6H |
| 24 | 15.90 / (0.625) | 9.50 / (0.375) | 19.05 / (0.75) | 38.10 / (1.50) | 25.90 / (1.02) | 67.55 / (2.66) | M6x1.0 6H |
| 32 | 20.95 / (0.825) | 12.70 / (0.50) | 25.40 / (1.00) | 50.80 / (2.00) | 38.60 / (1.52) | 89.65 / (3.53) | M8x1.25 6H |

General tolerance of ±0.10 applies to all dimensions unless otherwise stated.

5507 – BCR (Bulkhead Connector Receptacle)



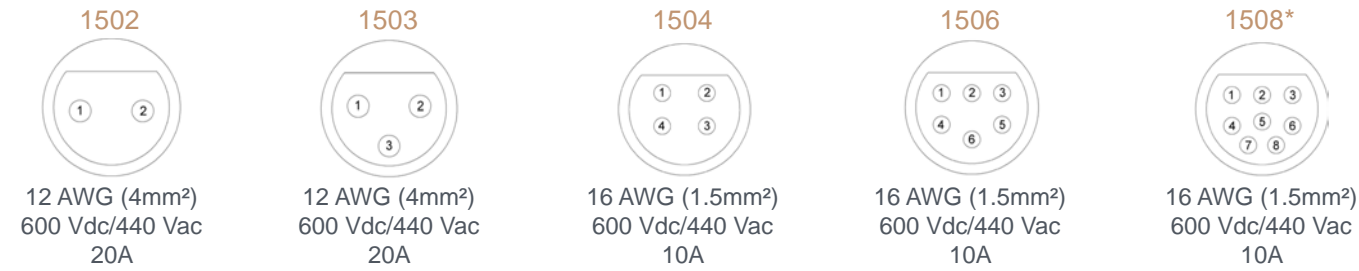
| Shell Size | L1mm (In) Min. | ØD1mm (In) | ØD2mm (In) | T1 | Installation Torque Nm (inch/lb) |
|------------|----------------|----------------|----------------|-----------------|----------------------------------|
| 15 | 12.70 / (0.50) | 17.25 / (0.68) | 33.00 / (1.30) | 5/8-18 UNF 2B | 14.12 / (125)* |
| 20 | 12.70 / (0.50) | 20.05 / (0.79) | 36.60 / (1.44) | 3/4-16 UNF 2B | 18.64 / (165)* |
| 24 | 12.70 / (0.50) | 26.65 / (1.05) | 43.95 / (1.73) | 1-14 UNS 2B | 25.42 / (225)* |
| 32 | 12.70 / (0.50) | 39.35 / (1.55) | 58.65 / (2.31) | 1 1/2-12 UNF 2B | 36.72 / (325)* |

General tolerance of ±0.10 applies to all dimensions unless otherwise stated.

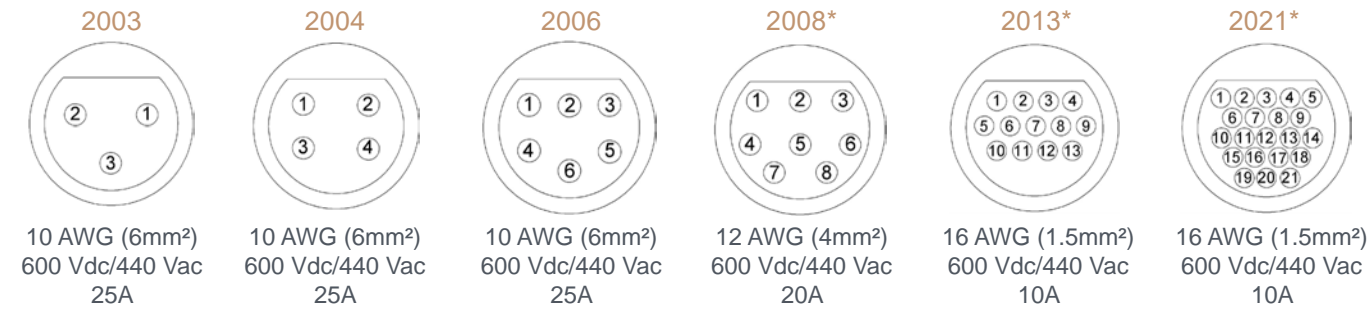
*Value based on installation into suitable parent material and dry metal threads.

Contact Configurations & Specifications

Shell Size 15



Shell Size 20



Shell Size 24



Shell Size 32



Notes:

Contact configuration shown is of front face of CCP (Cable Plug with Socket Contacts).

*Gigabit Ethernet performance available in 1508, 2008, 2013 & 2021 planforms.

Current capacity based on standard contacts at 20°C, derating for grouping, cable and ambient temperature must be applied.

Installation & Maintenance Guide

To avoid risk of electric shock, only energise when conductors are fully mated.

Plug

The moulded plug should be inspected along the cable length to ensure there is no damage or deformation prior to use.

The moulding itself is bonded to both the cable and the connector shell and any inspection should not place undue stress on these areas as damage to the connector and conductors may be caused. The front face and shoulder of the connector should be clean and dry prior to the application of a light film of silicone grease. Do not pack the face of the connector with grease. In order to mate the plug to the receptacle, first align the D shaped plug to the D shaped recess in the receptacle and lightly engage. Once the initial engagement is completed the connector should be fully engaged with the engaging nut until the faces are in contact, this will be noted by the engaging nut being finger tight. Finally, complete the mating operation by a further ½ turn of the engaging nut on size 20, 24 & 32 or a further full turn on size 15 connectors. No torque values are given to tighten the pair of connectors as it is a rubber to metal contact and no tooling is required as overtightening may cause permanent deformation. The correct engagement of the mating faces can be observed through the witness holes in the sides of the engaging nut.

After initial deployment the engaging nuts may be found to be loose, this is normal and can be simply remedied by retightening the connectors as described above.

Receptacle

O-ring seals must be checked to ensure they are free from damage or deformation prior to use, the advised lubricant is Novagard G624 silicone grease. Oils or spray silicone should not be used as they can contain materials which will damage or prematurely age the O-seal material.

The groove in the rear face of the receptacle should be clean and free from dents or scratches. Lubricate the O-ring with a light coating of the advised silicone grease ensuring full coverage of the seal. Do not pack the seal groove with grease as this is detrimental to the seal operation.

After fitting the receptacle to the mating face, the securing hardware should be fitted hand tight before tightening to the advised torque. The fitted connector should sit perpendicular to the mated face. If there is any angular misalignment of the receptacle, loosen the securing hardware and re-inspect all faces before refitting.

Cleaning

In order to clean the connectors, a soft bristle brush may be used with Isopropyl Alcohol. A gentle air blast can be used to facilitate the cleaning and also flash off the Isopropyl Alcohol.

No thinners or abrasives should be used to clean the connectors. Attention must be paid to the mating surfaces of the connectors to ensure that no damage is caused and no debris left prior to re-greasing.



UKCA Declaration of Conformity

We hereby confirm that the following assemblies:

Product: 55 Series

Product Description: Underwater Electrical Dry-Mate Connectors

Conforms to the Essential Requirements of the following Legislation:

UK Electrical Equipment (Safety) Regulations 2016

The Restriction of the Use of Certain Hazardous Substances in Electrical and Electronic Equipment Regulations 2012

By conforming with the Essential Requirements of the above legislation, and the applicable harmonised standards.

The manufacturer named below will retain the Technical Files required by the UK legislation for review by authorised persons. This Declaration becomes invalid if modifications are introduced without the manufacturer's specific approval.

This Declaration of conformity is issued under the sole responsibility of the manufacturer;



Scorpion Oceanics Ltd.
 Unit 2, Park Farm,
 Park Road,
 Great Chesterford,
 Saffron Waldon,
 Essex.

CB10 1RN



Adam Roberts

Documentation Representative

06/10/2022

Underwater Cable & Connector Specialists



EC Declaration of Conformity

We hereby confirm that the following assemblies;

Product: 55 Series

Product Description: Underwater Electrical Dry-Mate Connectors

Conforms to the Essential Requirements of the following Legislation:

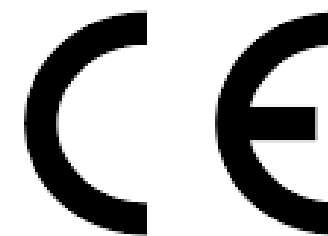
Low Voltage Directive 2014/35/EU

The Restriction of the Use of Certain Hazardous Substances in Electrical and Electronic Equipment Directive 2011/65/EU

By conforming with the Essential Requirements of the above legislation, and the applicable harmonised standards.

The manufacturer named below will retain the Technical Files required by the EU legislation for review by authorised persons. This Declaration becomes invalid if modifications are introduced without the manufacturer's specific approval.

This Declaration of conformity is issued under the sole responsibility of the manufacturer;



Scorpion Oceanics Ltd.
 Unit 2, Park Farm,
 Park Road,
 Great Chesterford,
 Saffron Waldon,
 Essex.

CB10 1RN



Adam Roberts

Documentation Representative

06/10/2022

Underwater Cable & Connector Specialists

 **sales@scorpionoceanics.co.uk**

 **scorpionoceanics.co.uk**
